



ONE-STOP MODULAR HOUSING SOLUTION PROVIDER

**您的
一站式模块化房屋
解决方案提供商**





COMPANY INTRODUCTION

公司介绍

山东希诺金属材料有限公司成立于2014年，是一家集生产、贸易、出口于一体的综合性工贸企业，专注于涂镀金属材料的研究与销售。从彩钢瓦到夹芯板再到模块化集成房屋，公司始终坚持“诚实守信”的核心价值观，坚持“为客户创造价值”的经营理念，致力于打造“中国品质”的国际品牌。依托中国雄厚的产业资源和完善的供应链体系，致力于打造集创新、环保与成本优势于一体的模块化房屋制造商。

Shandong Sino Metal Materials Co., Ltd. was established in 2014. It is a comprehensive industrial and trade enterprise integrating production, trade and export, focusing on the research and development and sales of coated metal materials. From color steel tiles to sandwich panels to modular integrated houses, the company has always adhered to the core values of "honesty and trustworthiness", adhered to the business philosophy of "creating value for customers", and is committed to creating an international brand of "Chinese quality". Relying on China's strong industrial resources and perfect supply chain system, it is committed to creating a modular house manufacturer that integrates innovation, environmental protection and cost advantages.





**PRODUCTION
BASE**
生产基地



CATALOG

目录



FOLDABLE CONTAINER HOUSE
折叠打包厢房



FLAT PACKAGE CONTAINER HOUSE
打包厢房



EXPANDABLE HOUSE
拓展箱房 (双翼厢房)



SPACECRAFT HOUSING
太空舱



FOLDABLE CONTAINER HOUSE SERIES

折叠打包箱系列

标准尺寸 Standard size:5800mm*2438mm*2500mm
防火等级 Fire-proof:A级
使用年限 Life span:20年以上
抗震 Anti-seismic:8级
抗风 Wind-proof: 11级

标配:1防盗门, 2个窗, 1个开关, 2个灯具, 2个普通插座, 1个空调插座, 1个漏电保护器, 1个空开。Standard: 1 security door, 2 windows, 1 switch, 2 lamps, 2sockets, 1 air-conditioner socket, 1 leakage protector, 1 air switch.

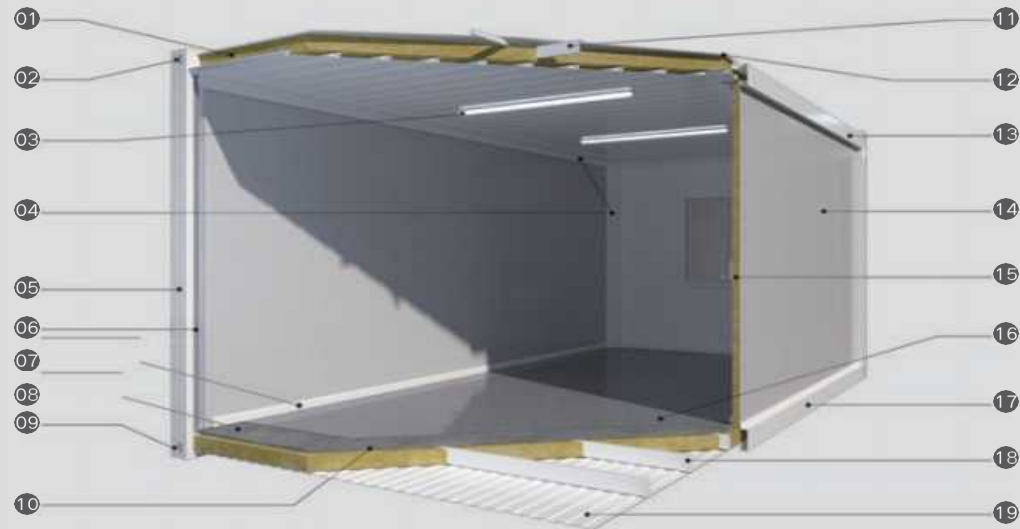
“Z”型折叠打包箱更适用于应急建设及工人宿舍, 应急项目一般要求建设周期极短, “Z”型折叠打包箱现场安装极为迅速, 3个人仅需半个小时即可搭建一套单箱成品, 单车运输箱体多达14套, 减少运输成本, 节约时间。而在品质、外观和实用性上可与打包箱媲美。

The "Z" type foldable container house is more suitable for emergency construction and worker dormitories.

Emergency projects generally require a very short construction cycle, and the "Z" type foldable container house is installed very quickly on site. Three people can build a single box of finished products in just half an hour, and up to 14 sets of boxes can be transported by single vehicle, reducing transportation costs and saving time. And in terms of quality, appearance, and practicality, it can be comparable to packaging boxes.



FOLDABLE CONTAINER HOUSE 折叠打包厢房



01.屋面保温
Roof Insulation
02.顶角件
Top Corner Part
03.节能灯
Energy Saving Lamp
04.阴角线
Seal
05.角柱
Corner Post
06.UPC 雨水管
PVC Water Pipe
07.PVC 踢脚线
PVC Skirting

08.防水膜
Water Proof Film
09.底角件
Bottom Corner Part
10.水泥纤维板, 多层板
Fiber Cement Board, Plywood
11.顶框次梁
Top Sub-beam
12.屋顶顶板
Roof Top External Plate
13.顶框主梁
Top Main Beam
14.墙板
Wall Panel

15.保温层
Insulation
16.PVC地板
PVC Floor Board
17.底框主梁
Bottom Main Beam
18.底框次梁
Bottom sub- beam
19.封底板
Bottom External Plate



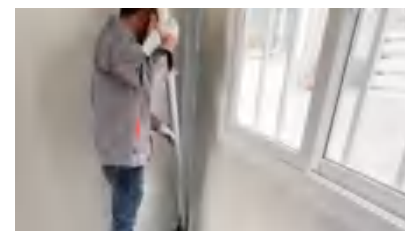
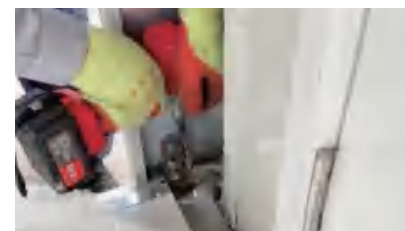
折叠打包箱产品特点 FEATURES OF FOLDABLE CONTAINER HOUSE

- 空间优化能力:折叠打包箱房在运输过程中具备明显的优势。经过折展后,使得装载时占用较少的空间。在这种模式下,一辆 17.5米的车辆就能够轻松装载14个箱子,大大降低了运输成本,提高了物流效率。
- 快速部署能力:折叠集装箱房具备快速展开和收拢的特点,具有快速安装速度,只需简单一拉一推,仅需3分钟即可完成基本安装。
- 可重复使用和可扩展性:它们可以多次拆卸和组装,并且在需要时可以进行扩展或重新布局。这种灵活性和适应性使折叠打包箱房成为应对不同场景和需求的理想选择。
- 高强度与耐用性:采用高品质的钢材和特殊的制造工艺,具有较高的强度和耐用性。它们可以承受各种恶劣环境和运输条件,确保在使用过程中具有出色的稳定性和耐用性。
- 安全性:经过特定的设计和制造过程,具有防火、防盗、防潮等性能,可以确保您在使用过程中的安全性和可靠性。
- 多功能性:不仅可以用作住宿、办公或仓储,还可以用于淋浴、厨房、卫生间等不同的用途。这种多功能性使其成为各种场合的理想选择,无论是临时住所、工地办公室、还是野外作业场所等。

- Space optimization capability: Folding and packaging box houses have obvious advantages during transportation. After folding, it takes up less space during loading. In this mode, a 17.5 meter vehicle can easily load 14 boxes, greatly reducing transportation costs and improving logistics efficiency.
- Quick deployment capability: The folding container room has the characteristics of rapid expansion and collapse, and has fast installation speed. It only requires a simple pull and push, and can complete basic installation in just 3 minutes.
- Reusability and scalability: They can be disassembled and assembled multiple times, and can be expanded or rearranged when needed. This flexibility and adaptability make folding and packaging box houses an ideal choice for responding to different scenarios and needs.
- High strength and durability: Adopting high-quality steel and special manufacturing processes, it has high strength and durability. They can withstand various harsh environments and transportation conditions, ensuring excellent stability and durability during use.
- Security: After a specific design and manufacturing process, it has properties such as fire prevention, theft prevention, and moisture resistance, which can ensure your safety and reliability during use.
- Versatility: Not only can it be used for accommodation, office, or storage, but it can also be used for different purposes such as showers, kitchens, bathrooms, etc. This versatility makes it an ideal choice for various occasions, whether it is a temporary residence, construction site office, or outdoor work site.



折叠打包箱安装过程 INSTALLATION PROCESSES OF FOLDABLE CONTAINER HOUSE





EXPANDABLE HOUSE SERIES

拓展箱系列

拓展箱活动室，也被称为双翼折叠箱，这所房子的空间几乎是打包箱房的三倍，使其成为临时住宅行业的变形金刚。

它的特点是易于运输，展开时非常实用。它可以作为民宿和临时住宿的理想住所。

Expandable container activity rooms, also known as double wing folding rooms, This house has been expanded by nearly three times the space of a container house, making it a transformer in the temporary housing industry. Its characteristic is easy transportation, and it is very practical when unfolded. it can be used as an excellent residence for home stays and temporary accommodations.

20英寸可拓展集装箱房规格

20FT EXPANDABLE CONTAINER HOUSE SPECIFICATION

外部尺寸	External size	5900*6260*2480mm
内部尺寸	Internal size	5480*6110*2240mm
包装尺寸	Package size	5900*2200*2480mm
重量	Weight	3000kg

40英寸可拓展集装箱房规格

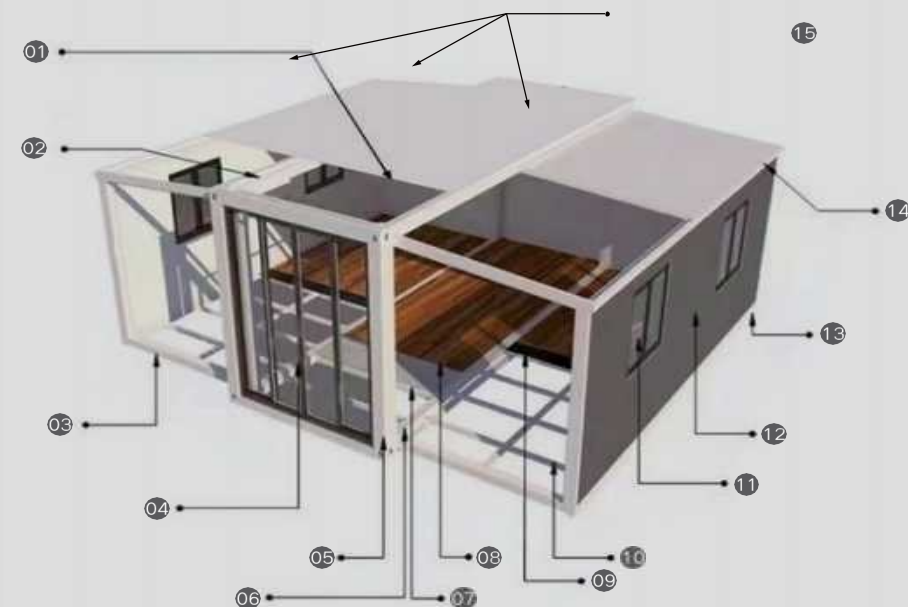
40FT EXPANDABLE CONTAINER HOUSE SPECIFICATION

外部尺寸	External size	6300*11800*2500mm
内部尺寸	Internal size	6140*11570*2240mm
包装尺寸	Package size	2200*11800*2500mm
重量	Weight	5000kg



拓展厢房结构

EXPANDABLE HOUSE STRUCTURE



- 01.顶部 831 吊顶瓦
Top 831 suspended ceiling tiles
- 02.顶主梁150*100*2.0mm镀锌方管
Top main beam 150*100*2.0mm galvanized square tube
顶次主梁100*50*1.5mm镀锌方管
Top secondary main beam 100*50*1.5mm
- 03.侧底水槽折件
Side bottom sink folding parts
- 04.断桥铝入户门(双玻璃)
Broken bridge aluminum entrance door (double glass)
侧底次框架60*40*2.0mm镀锌方管
Side bottom secondary frame 60*40*2.0mm galvanized square tube
- 05.主体框架150*150*2.0mm镀锌方管
Main frame 150*150*2.0mm galvanized square tube
- 06.主梁 150*100*2.0mm镀锌方管
Main beam 150*100*2.0mm galvanized square tube
主次梁100*100*2.0mm镀锌方管
Primary and secondary beams 100*100*2.0mm
- 07.18mm水泥纤维地板
18mm cement fiber floor
- 08.1.6塑胶
1.6 Plastic

- 09.18mm 竹胶板
18mm bamboo plywood
- 10.侧翼地板檩条60*40*2.0方管
Side wing floor purlin 60*40*2.0 square tube
- 11.断桥铝双玻璃推拉窗
Broken bridge aluminum double glass sliding window
- 12.75mm 三明治夹芯复合板
75mm sandwich sandwich composite board
- 13.侧底框架 80*40*1.5mm镀锌方管
Side bottom frame 80*40*1.5mm galvanized square tube
- 14.侧顶主梁120*60*1.5mm镀锌方管
Side top main beam 120*60*1.5mm galvanized square tube
侧顶次主梁80*60*1.5mm镀锌方管
Side top secondary main beam 80*60*1.5mm galvanized square tube
- 15.50mm 三明治夹芯复合板
50mm sandwich sandwich composite board



拓展厢房特点

FEATURES OF EXPANDABLE HOUSE

- 建设方便 快速落地

CONVENIENT CONSTRUCTION

安装灵活，移动方便，施工周期短，可重复使用，结构稳定，经济实用。

Flexible installation, easy to move, short construction period, reusable, stable structure, economic and practical.

- 拆装便利

CONVENIENT DISASSEMBLY AND ASSEMBLY

拆装便利节省人工成本，提升安装效率

Convenient disassembly saves labor cost and improves installation efficiency.

- 按需定制 免费设计

ON DEMAND CUSTOMIZATION

专业团队帮您空间规划，产品设计制造一体的配套服务

Professional team to help you space planning, product design and manufacturing integrated supporting services.

- 结构稳定

STRUCTURAL STABILITY

采用优质加厚钢结构，抗压性强，可抵抗各种恶劣天气

High quality thickened steel structure, strong compression resistance, can resist all kinds of bad weather.

- 箱房整体

CONTAINER AS A WHOLE

内部空间结构合理，可整体移动，寿命达20年

The internal space structure is reasonable, the whole can move, and the life span is up to 20 years.

- 多样化的选择

DIVERSIFIED CHOICES

自定义皮肤，支持个性定制，轻松搭配各类型主题风格

Custom skin, support personalized customization, easy to match various types of theme style



房屋功能图

FUNCTIONAL DIAGRAM THE HOUSE



一室一厅一厨一卫



一室一厅一厨一卫
One bedroom
One living room
One kitchen
One bathroom



两室一厅一厨一卫
Two bedroom
One living room
One kitchen
One bathroom



两室一厅一厨一卫



一室一厅一厨一卫
One bedroom
One living room
One kitchen
One bathroom



三室一厅一厨一卫
Three bedroom
One living room
One kitchen
One bathroom



三室一厅一厨一卫



两室一厅一厨一卫
Two bedroom
One living room
One kitchen
One bathroom



三室一厅一厨一卫
Three bedroom
One living room
One kitchen
One bathroom



FLAT PACKED CONTAINER HOUSE SERIES

装配式箱房系列

装配式箱房系列

标准尺寸: 6055*2990*2896

出口尺寸: 5800*2438*2500

Standard size: 6055*2990*2896

Outlet size: 5800*2438*2500

打包箱房是焊接结构, 钢构采用镀锌技术, 由结构系统、地面系统、楼面系统、墙面系统、屋面系统组成, 每个系统由数个单元模块组成, 单元模块在工厂制造完成, 房屋现场由单元模块装配完成。它们时尚、不同寻常, 安装快捷, 易于移动和运输, 便于拆迁和储存, 且绿色环保。打包箱房引入现代化设计元素, 根据产品类别和客户需求, 进行定制服务, 可以上下错落叠加、左右伸长缩短, 任意拼装, 打造大空间、个性化的房屋。

The packaging box room is a welded structure, and the steel structure adopts galvanized technology. It consists of a structural system, ground system, floor system, wall system, and roof system. Each system consists of several unit modules, which are manufactured in the factory and assembled on site. They are fashionable, unusual, fast to install, easy to move and transport, easy to demolish and store, and environmentally friendly. The packaging box room introduces modern design elements and provides customized services based on product categories and customer needs. It can be stacked up and down, stretched and shortened left and right, and assembled arbitrarily to create a large space and personalized house.



高效便捷



高耐用性



高安全性



高耐用性



高耐用性

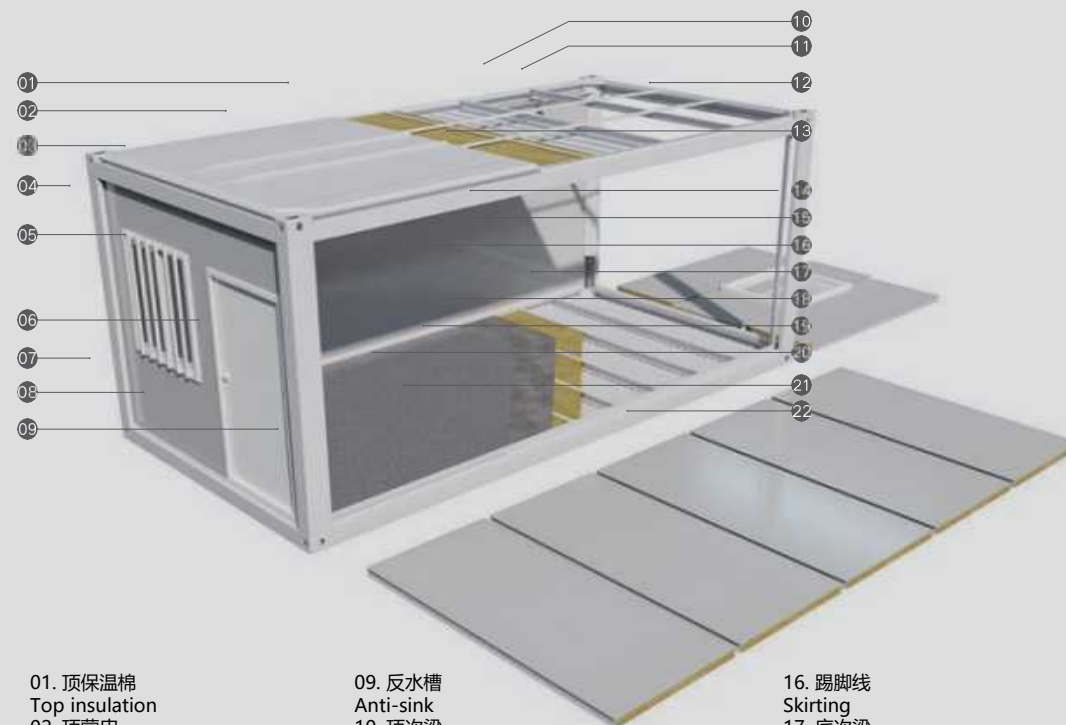


高耐用性



装配式箱房结构

PREFABRICATED BOX ROOM STRUCTURE



- 01. 顶保温棉
Top insulation
- 02. 顶蒙皮
Top skin
- 03. 顶横梁
Top main beam
- 04. 立柱
Column
- 05. 防盗窗
Security window
- 06. 防火门
Fire-proof steel door
- 07. 底角件
Bottom corner pieces
- 08. 底横梁
Bottom beam

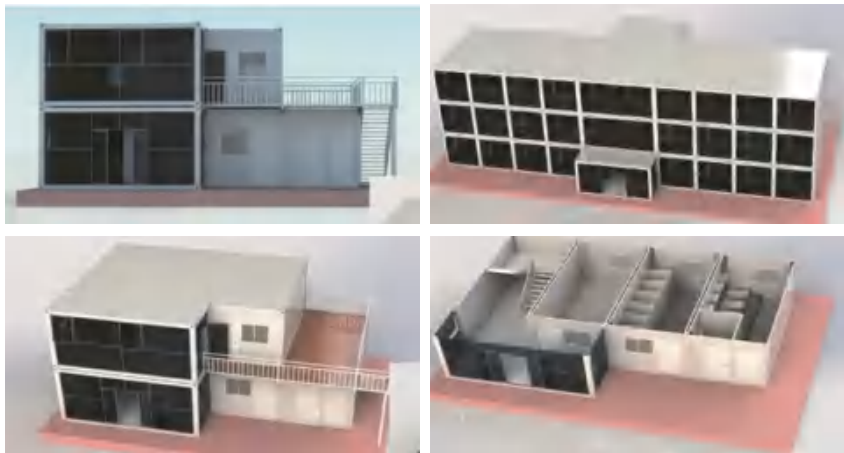
- 09. 反水槽
Anti-sink
- 10. 顶次梁
Top second support
- 11. 顶支撑
Top support
- 12. 顶角件
Top corner piece
- 13. 顶侧梁
Top side beam
- 14. 立柱包件
Column fitting
- 15. 内置蓄水管
Built-in downspout

- 16. 踢脚线
Skirting
- 17. 底次梁
Bottom second beam
- 18. 底保温棉
Bottom insulation
- 19. 水泥板
Cement board
- 20. 塑胶地板
PVC flooring
- 21. 底侧梁
Bottom side beam
- 22. 墙面板
Wall panel



装配式箱房结构

PRODUCT ADVANTAGES OF PREFABRICATED BOX ROOM



装配式箱房产品特点

FEATURES OF PREFABRICATED BOX ROOM

鸿泰鼎盛装配式箱房采用独有的第三代装配技术，高度集成、拆装快捷。产品可拆卸压缩，压缩后，1 个标准 40 尺集装箱可容纳八套产品，可大幅节省运输费用。The Hongtai Dingsheng prefabricated box house adopts unique third-generation assembly technology, which is, highly integrated and quickly disassembled. The product can be disassembled and compressed. After compression, a standard 40 foot container can accommodate eight sets of products, which can greatly save transportation costs.

安装快速

FAST INSTALLATION

01

傻瓜式安装，可快速安装和拆卸，也可组装后整箱移动搬运，方便快捷，拆卸可回收，无建筑垃圾产生、环保耐用。Foolish installation, which can be quickly installed and disassembled, or can be assembled and moved whole boxes, making it convenient and fast. It can be disassembled and recycled, with-out generating construction waste, and is environmentally friendly and durable.

配套完善

COMPLETE SUPPORTING

03

模块化设计，可搭配不同造型的配件，屋顶、走廊、楼梯、玻璃幕墙、阳台、厨卫等可应用灵活配置组合并可根据需求对外观、内部进行装饰。Modular design can be paired with accessories of different shapes. Roofs, corridors, stairs, glass curtain walls, balconies, kitchens, etc. can be flexibly combined according to needs, and the exterior and interior can be decorated according to needs.

组合灵活

FLEXIBLE COMBINATION

02

组合形式灵活多变，可单箱使用，可组合成微开式大空间，并能增加至 3 层。借由不同的模块组合就可实现不同的功能。The combination form is flexible and variable, can be used in a single box, can be combined into an open large space, and can be stacked up to 3 layers. By combining different modules, different functions can be achieved.

安全耐用

SAFETY AND DURABILITY

04

结构进行加固和保温处理、顶部采用专利防水设计，安全耐用、防风抗震，使用寿命达 20 年以上，抗震烈度 8 度，抗风 11 级。The structure is reinforced and insulated, and the top adopts patented waterproof design, which is safe and durable, wind and seismic resistant, with a service life of over 20 years, seismic intensity of 8 degrees, and wind resistance of 11 degrees.



房屋功能三维图 3D DRAWING OF HOUSE FUNCTION



二合一剖面
TWO IN ONE OVERHEAD VIEW



二合一常规
TWO IN ONE SECTION



女卫生间
LADIES' ROOM



二合一办公室
TWO IN ONE OFFICE



单人间
SINGLE



男卫生间
MEN' ROOM



二合一办剖面
TWO IN ONE OFFICE PROFILE



单人间常规
SINGLE ROOM OVERLOOKING



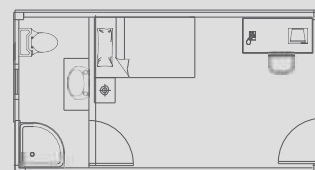
女浴室
WOMEN'S BATHROOM



单人间办公室
SINGLE ROOM OFFICE



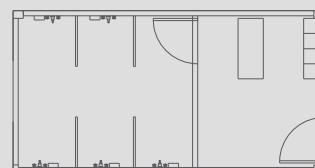
男浴室
MEN'S BATHROOM



独立卫生间
BOX ROOM
WITHE SEPARATE TOILET



公共卫生间
PUBLIC TOILET



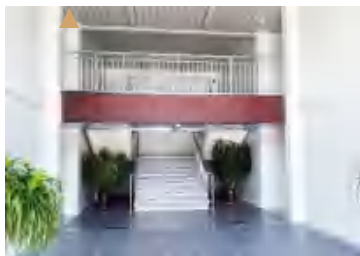
公共洗浴室
PUBLIC BATHROOM

COMMON ACCESSORIES

常用配件



▲ 走廊箱
CORRIDOR BOX



▲ 楼梯
STAIRS

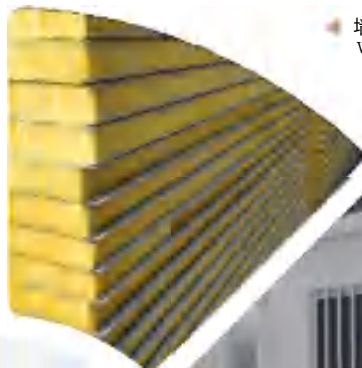


▲ 玻璃幕墙
GLASS SCREEN WALL

▶ 集成吊顶
INTEGRATED
CEILING



◀ 墙板
WALL PANELS



◀ 塑钢推拉窗
UPVC SLIDING WINDOW
USED FOR INTERNAL DECORATION



▲ 顶部角件
TOP CORNER



▲ 底部角件
BOTTOM CORNER



▲ 立柱
COLUMN

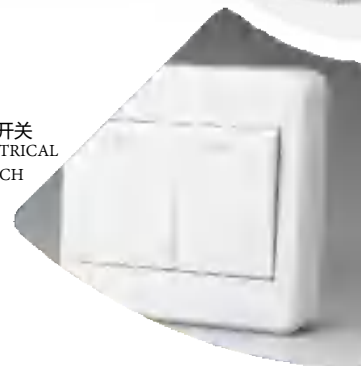
◀ 钢质防盗门
STEEL SECURITY DOOR



◀ 角件
COENER PIECE



▶ 正泰开关
ELECTRICAL
SWITCH



▲ 三角铁
TRANGLE



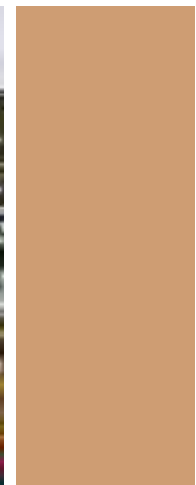
SPACECRAFT HOUSING SERIES

太空舱系列

太空舱房屋是根据太空舱的外观设计的，一般可以用作度假村、露营地、民宿、酒店等。太空舱房采用钢结构框架，外墙由航空铝板制成，墙壁由高端隔热材料制成；全景环绕落地窗，顶部为观景天窗，全部采用双层中空钢化玻璃；室内地板采用先进的复合木地板。整个房子采用智能系统，窗帘、天窗、投影仪、中央空调、照明等全部通过智能系统控制，科技感很强。

Space capsule houses are designed based on the appearance of the space capsule and can generally be used as resorts, camping sites, homestays, hotels, etc. The space cabin adopts a steel structure frame, with outer walls made of aviation aluminum plates and walls made of high-end insulation materials; The panoramic view surrounds the french window, and the top is the viewing skylight, all of which are made of double-layer hollow tempered glass; The indoor floor adopts advanced composite wood flooring. The entire house adopts an intelligent system, with curtains, skylights, projectors, central air conditioning, lighting, etc. all controlled by the intelligent system, which has a strong sense of technology.







EXPORT CONTAINER LOADING

出口装柜





CONTACT US

Tel: +86-531-88996506

Tel: +86-531-88996505

Tel: +86-531-81182799

Office Address:705-708, No.3, Zhongrun Century Center, Jinan, China

